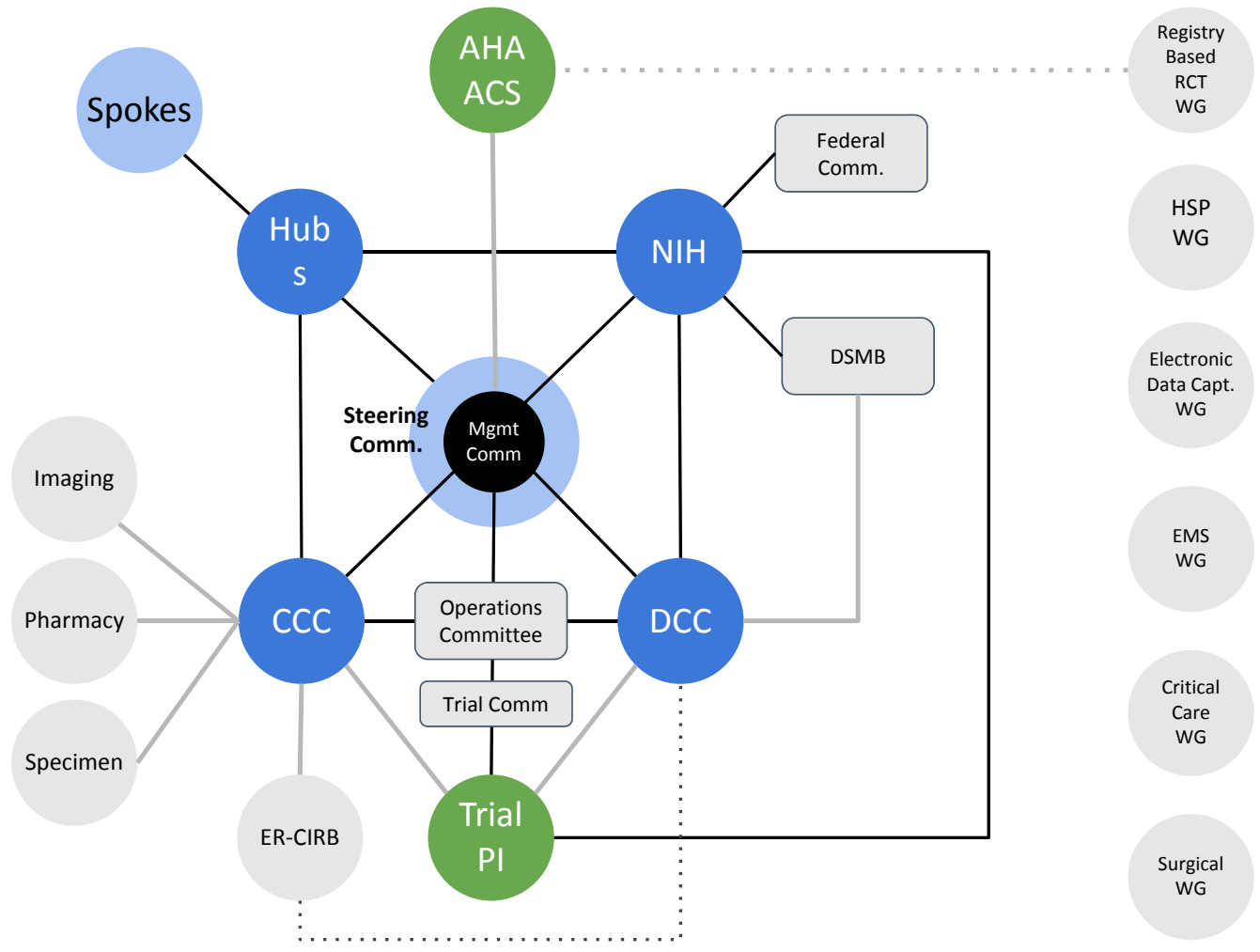
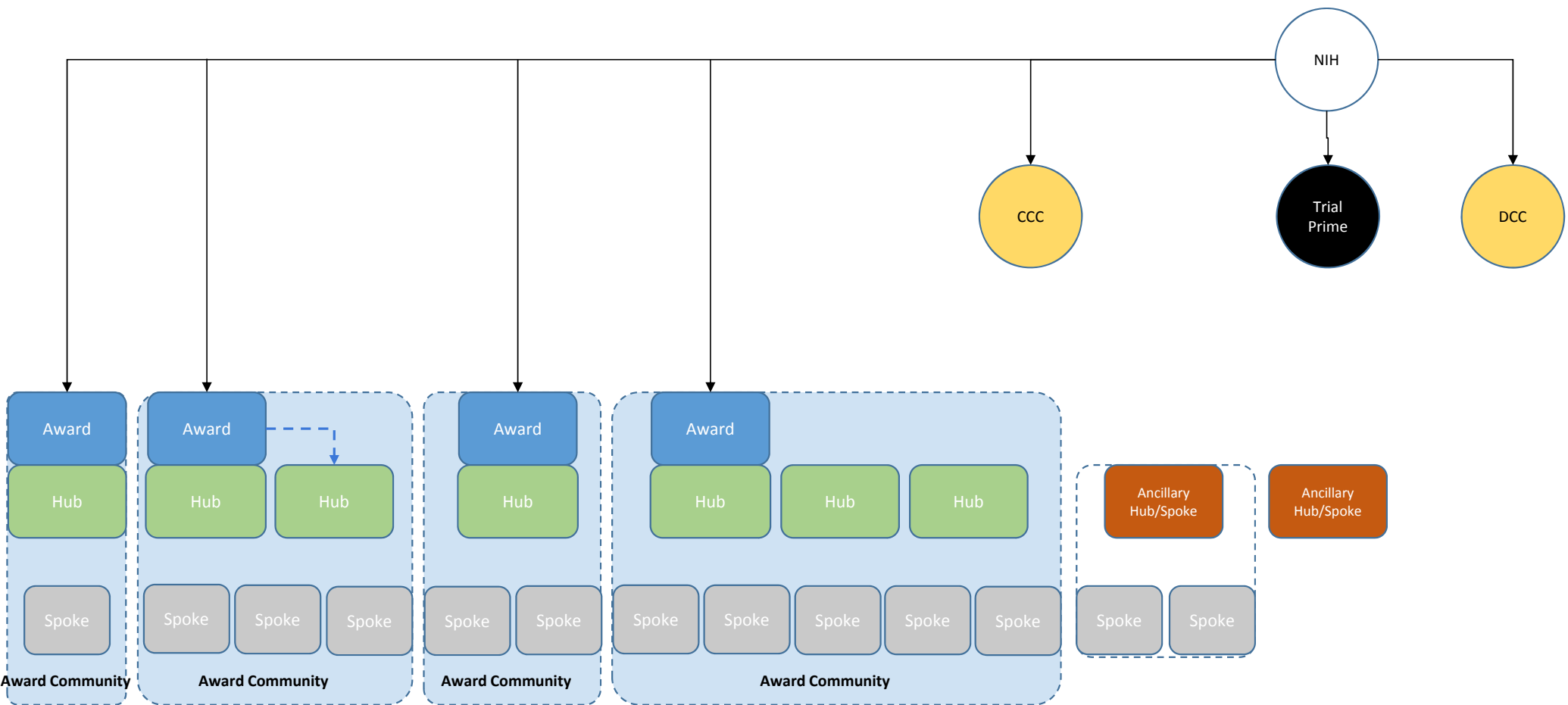


# Organizational Structure



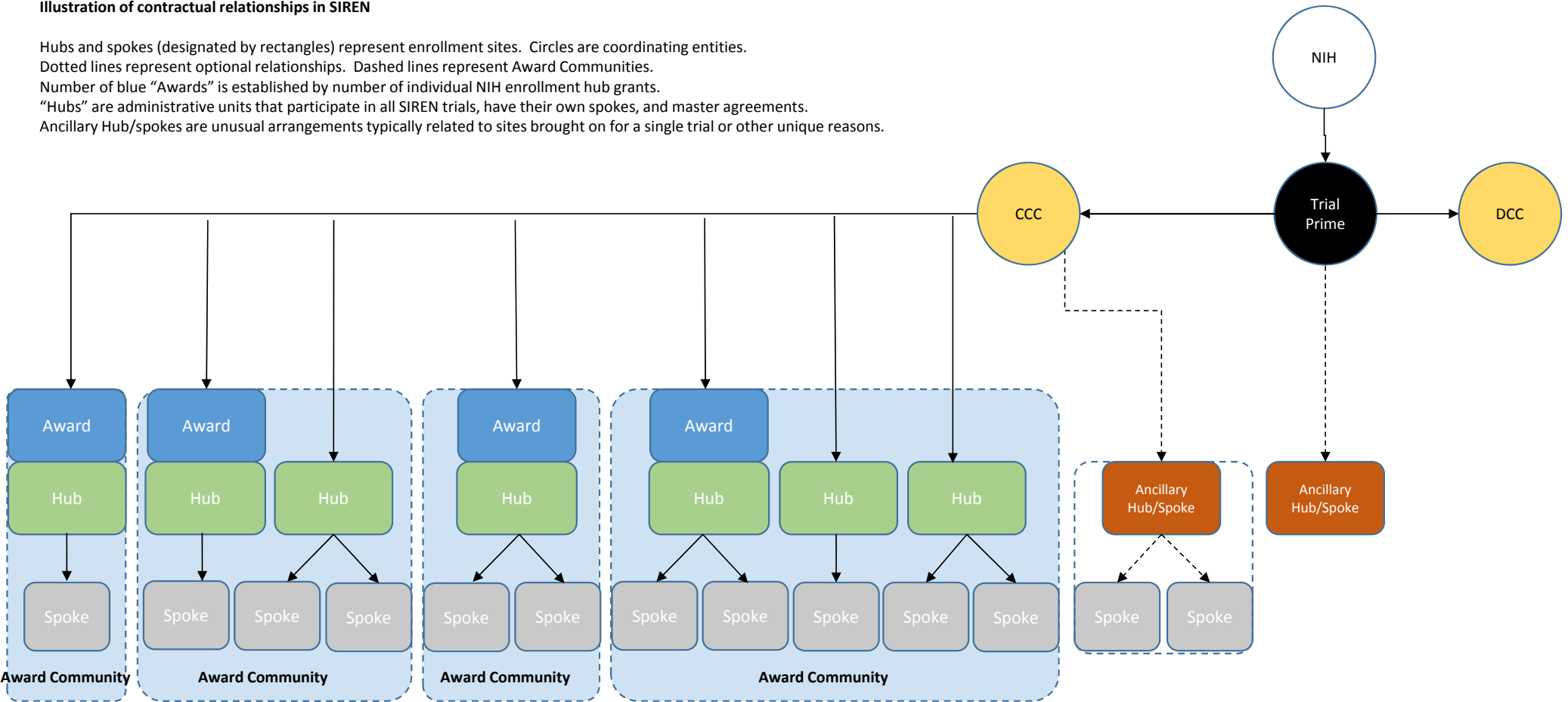


**Illustration of grant relationships in SIREN**

Hubs and spokes (designated by rectangles) represent enrollment sites. Circles are coordinating entities. Light blue boxes with dotted edges are Award Communities. Dashed blue line represents optional sub-award.

### Illustration of contractual relationships in SIREN

Hubs and spokes (designated by rectangles) represent enrollment sites. Circles are coordinating entities.  
Dotted lines represent optional relationships. Dashed lines represent Award Communities.  
Number of blue "Awards" is established by number of individual NIH enrollment hub grants.  
"Hubs" are administrative units that participate in all SIREN trials, have their own spokes, and master agreements.  
Ancillary Hub/spokes are unusual arrangements typically related to sites brought on for a single trial or other unique reasons.



# Trial Recruitment and Pipeline

Adaptable open clinical trial infrastructure

Collaborative leadership (typically multiple PI)

Respectful of investigators' ownership and control of the science

Sharing of operational and statistical responsibilities

Facilitating successful implementation and data integrity

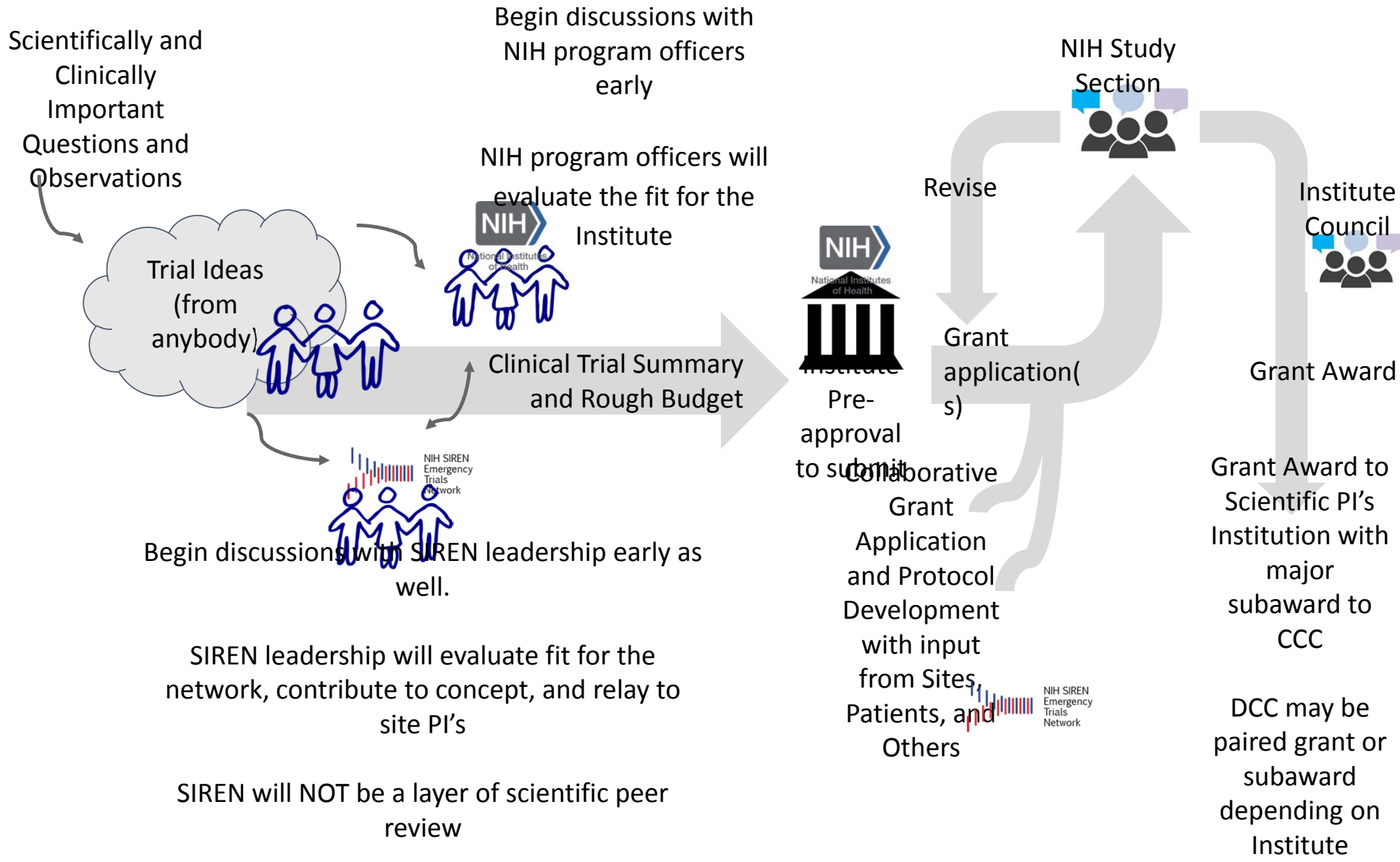
# Trial Recruitment and Pipeline

Effectiveness and efficiency from consistent re-use of:

- established skilled research teams and interpersonal relationships
- pre-existing contractual, regulatory, administrative frameworks
- familiar and consolidated clinical trial management technology.

Optimal strategy for working with the network is:

- contact prior to requesting permission from the institute to submit
- collaborative development of trial, grant application, and budget



# Scope of Portfolio

Late learning phase or confirmatory phase trials

Patient oriented outcomes

Controlled efficacy to registry based RCT

Appropriate sized for our scalable network

Primary focus on neurological, cardiac, lung and blood (NINDS/NHLBI)

Secondary focus on other IC portfolios, and health services

# Potential Sources of Trials

Early referrals from program officers at NIH

Investigators contacting us directly

SIREN initiated/generated trials

(addressing needs, portfolio gaps, IC priorities)

(retreats/workshops)

Industry partnerships (SBIRs)



# Outreach

- Network Collaboration
  - PECARN
  - PETAL
  - LITES
  - StrokeNET
  - Others
- Stakeholder Engagement

Lots of resources at....

<http://siren.network>

The screenshot shows the SIREN website homepage. At the top, there is a navigation bar with the SIREN logo and links for NETT HOME, SIREN LOGIN, WEBDCU, and CONTACT. Below this is a secondary navigation bar with links for ABOUT SIREN, CLINICAL TRIALS, EVENTS, RESOURCES, TRAINING, and PATIENTS & COMMUNITIES. The main content area is a grid of colorful tiles. The first tile on the left is titled 'WHAT IS SIREN?' and describes the network's goal to improve patient outcomes. Other tiles include 'BOOST-3', 'Chest Pain', 'HO,BIT', 'ICECAP', 'WebDCU', 'NIH', 'SIREN Meeting' (March 5, 2018), 'TRAINING', 'ENROLLMENT DASHBOARD', 'VIRTUAL CONFERENCE ROOMS', 'The SIREN website is complete!', 'Clinical Trials in the Community', and 'DIRECTORY'. At the bottom, there is a footer with a grid of links for ABOUT SIREN, CLINICAL TRIALS, EVENTS, RESOURCES, TRAINING, and PATIENTS & COMMUNITIES. The footer also includes contact information and logos for the University of Michigan and various NIH centers.