

Minnesota Spoke Splash

Welcome!

The Minnesota Spoke Splash is the monthly newsletter of the Minnesota NETT Hub. If you know of others who should receive this newsletter directly, if you would like to change your email subscription, or if you have comments or suggestions, please submit them to Marinda Bland (blan0181@umn.edu).

Future NETT Trials

The NETT is using its monthly journal club to hold discussion about new clinical trials in development. In May, the journal club presentation was for ESETT (A Status Epilepticus study for intractable seizures presenting in the ED). It will be a three-arm study testing fosphenytoin, valproic acid and levetiracetam (keppra) for safety and efficacy within 20 minutes of drug administration. It is adaptive so as the trial progresses and the data is analyzed, one arm will likely drop out according to pre-established stopping criteria. The NETT is collecting estimates of ED visit for adult and pediatric seizures now to determine what enrollment rates can be anticipated. If you would like a copy of the slide set from the presentation, contact Marinda at blan0181@umn.edu.

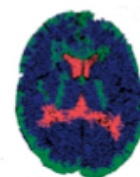
ICECAP will be the June Journal club discussion. All are invited to attend the web based journal club to be held Wednesday June 12 at NOON Central Time. ICECAP will look at neuro recovery after cardiac arrest treated with hypothermia. To attend, go to: nett.umich.edu (NETT website). Look for "Professional" and then scroll down to the Virtual Meeting Room. Click on the meeting. When you enter the room, enter as a "guest" with your name and "MN". There will be a phone number to call to get the audio. Questions? Call us and we can walk you through the log in process.



UNIVERSITY
OF MINNESOTA
Driven to DiscoverSM

Contents

Page 1	Welcome
Page 1	Future NETT Trials
Page 2	Thank You
Page 2	Training & Maintaining Certifications
Page 2	ProTECT
Page 3	POINT
Page 4	SHINE
Page 5	NETT Contacts



**Neurological
Emergencies
Treatment
Trials**

Thank You

Thank you to all the sites that responded to our request for letters of support for the NIH grant to develop a Regional Stroke Research Network. The application was submitted in mid May. NIH Selections will be announced in early fall 2013.

Training and Maintaining Certifications

The NETT database tracks training and expiration dates. We, in turn, send out reminders to you in advance of its expiration. We know that email boxes are overflowing on a daily basis. So we especially appreciate it when you promptly respond to our reminders for training updates.

If a training certification expires, you cannot complete that assessment for the study (until you are recertified). The NIHSS and mRS are probably the two trainings that are left to expire most frequently. Just be sure to take the RE-certification second time around – it has a longer expiration date (2 years or more). The reminder messages are coming from Marinda Bland in our office: blan0181@umn.edu. (Don't shoot the messenger!)

ProTECT

Progesterone for the Treatment of Traumatic Brain Injury



ProTECT continues to enroll at close to the anticipated rate (67% of targeted enrollment). With the addition of new NETT Hubs, it may meet its enrollment goal within the year. The NETT is testing out the potential of “virtual monitoring” for this study. Regions is working with the NETT as the first pilot site to help develop the process.

ProTECT Minnesota Spokes Enrollment Summary		
Spoke	Active	Enrollments
Hennepin County Medical Center	09/03/2010	16
Regions Hospital	11/04/2010	50
North Memorial Medical Center	09/02/2011	7

ProTECT National Hub Enrollment Ranking			
Total Enrollment Nationwide:	774	Enrollment Goal:	1140
Rank	Hub	Enrollment	
1	Cincinnati, Emory	74	
3	Arizona	72	
4	Minnesota , Stanford	67	
6	Texas	66	

POINT

Platelet-Oriented Inhibition in New TIA and minor ischemic stroke Trial



Congratulations to United on their first enrollment!

This study is at approximately 35% of its enrollment target of 4150. Recently I heard that they expect it to continue for about 4 more years. Recent changes were requested for the consent to now include a statement about the CHANCE trial in Japan. If you have not made that change yet, please do so as soon as possible and send the revised consent to Kathleen.

We are welcoming two new POINT sites: Abbott Northwestern Hospital in Minneapolis and University of Kansas Medical Center (KUMC) in Kansas City, KS. Both sites have IRB submissions in the works and hoping for approvals soon.

IPADs for Consent Process

Two sites have used the iPad to supplement the consent process. Regions has had a good experience using it, finding it helpful with patient questions and concerns. Our test of it at HCMC actually led to the patient changing her mind after viewing the video! The use of the video is being captured now on the CRF and on the screen failure logs.

If your site would like to use the iPad as a supplement, it will first need to be approved by your IRB. A link to a copy of the video and the script is available on the NETT website under the POINT Toolbox. Upon request, University of Michigan will ship one iPad to your site to be used only for the POINT trial.

POINT Minnesota Spoke Enrollment Summary

Spoke	Active	Enrollment
Hennepin County Medical Center	June 2010	18
UMMC - Fairview	November 2010	11
Fairview Southdale Hospital	July 2010	7
Regions Hospital	January 2012	24
Ridgeview Medical Center	February 2012	1
United Hospital	August 2012	1

POINT National Hub Enrollment Ranking

Total Enrollment Nationwide: 1502		Total Enrollment Goal: 4150	
Rank	Hub	Enrollment	
1	UPenn	130	
2	Wayne State	80	
3	Minnesota	65	
4	Cincinnati	61	
5	Texas	45	

SHINE

Stroke Hyperglycemia Insulin Network Effort



We are still holding at only 2 enrollments so far at UMMC. The 12 hour time window from stroke onset to enrollment gives us an opportunity to “wait and see” if glucose levels rise and make subjects potentially eligible. Both UMMC and HCMC are actively enrolling sites thus far.

SHINE Minnesota Spoke Enrollment Summary

Spoke	Active	Enrollment
UMMC - Fairview	December 2012	2
HCMC		0

SHINE National Hub Enrollment Ranking

Total Enrollment Nationwide: 142		Total Enrollment Goal: 1400	
Rank	Hub	Enrollment	
1	Emory, NYP	19	
3	Temple, Kentucky	11	
5	Ohio State, Texas	8	
7	Cincinnati	5	
9	Pittsburgh, Maryland	3	
11	Minnesota , Wayne, Wisconsin, Stanford	2	
15	UCSF, UPenn, HFHS, OHSU, UCLA	1	

NETT Contacts

University of Minnesota Hub Staff

Michelle Biros, MD, MS	Hub Principal Investigator
Mustapha Ezzeddine, MD	Hub Co-Principal Investigator
Kathleen Miller, BSN, CCRC	Project Manager
Julie Scherber, RN	Research Coordinator (SHINE)
Dave Hildebrandt, RN	Research Coordinator (ProTECT)
Mindy Rumbolz, RN	Research Coordinator (POINT)
Michelle Lambert, RN	On Call Coordinator
Raven Loya, RN	On Call Coordinator
Emily Marino-Vang	On Call Coordinator
Marinda Bland	Administrative Assistant

Spoke Contacts

ProTECT III

Principal Investigator

Gaylan Rockswold, MD
David Dries, MD
Eric Irwin, MD

Primary Study Coordinator

Sandi Wewerka
Patty Reicks, RN

Spoke

Hennepin County Medical Center
Regions Hospital
North Memorial Medical Center

POINT

Principal Investigator

Mustapha Ezzeddine, MD
Mustapha Ezzeddine, MD
Aaron Burnett, MD
Alexander Zubkov, MD
David Larson, MD
David Larson, MD
Paul Schanfield, MD
Nick Itzin, MD
Mark Young, MD

Primary Study Coordinator

Bridget Ho, CCRC
Erica Chopske, RN, CCRC

Spoke

University of Minnesota Medical Center
Hennepin County Medical Center
Regions Hospital
Fairview Southdale Hospital
Ridgeview Medical Center
Two Twelve Medical Center
United Hospital
Essentia Health – St. Mary's
Abbott Northwestern Hospital

SHINE

Mustapha Ezzeddine, MD
Mustapha Ezzeddine, MD

University of Minnesota Medical Center
Hennepin County Medical Center

The NETT is funded by a grant from NIH-NINDS.



The University of Minnesota shall provide equal access to and opportunity in its programs, facilities, and employment without regard to race, color, creed, religion, national origin, gender, age, marital status, disability, public assistance status, veteran status, sexual orientation, gender identity, or gender expression.

Inquiries regarding compliance may be directed to the Director, Office of Equal Opportunity and Affirmative Action, University of Minnesota, 274 McNamara Alumni Center, 200 Oak Street S.E., Minneapolis, MN 55455, (612) 624-9547, eoaa@umn.edu. Website at www.eoaa.umn.edu.

This publication/material is available in alternative formats upon request. Please contact Marinda Bland, NETT Research, Department of Emergency Medicine, 717 Delaware St. S.E., Suite 510A, Minneapolis, MN 55414, 612-624-7426, blan0181@umn.edu.

The University of Minnesota, founded in the belief that all people are enriched by understanding, is dedicated to the advancement of learning and the search for truth; to the sharing of this knowledge through education for a diverse community; and to the application of this knowledge to benefit the people of the state, the nation and the world. The University's threefold mission of research and discovery, teaching and learning, and outreach and public service is carried out on multiple campuses and throughout the state.