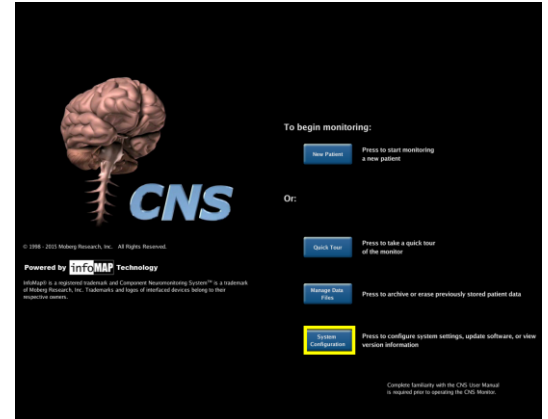


PASSWORD SETUP

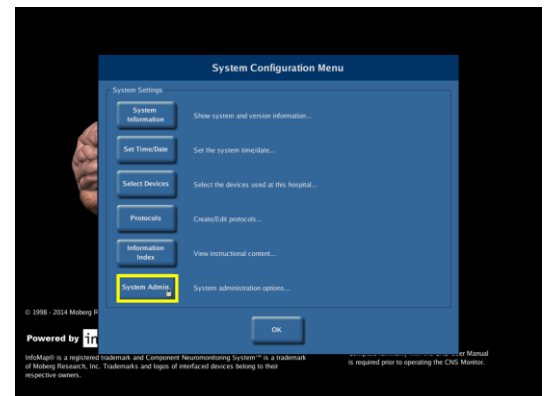
The following instructions are for changing system passwords. The Administrator Password, which is always active, protects access to advanced settings and configuration. In addition, data management activities can be password-protected. These instructions are for CNS Monitors running software application version A.12.64 and newer.

PASSWORD SETUP FROM THE OPENING SCREEN

1. From the opening screen, select the **System Configuration** button.



2. Select **System Admin.**



3. Use the onscreen keyboard to enter the Administrator Password and press **OK**.

Note: The default password is *moberg*; it can be changed at any time by following these instructions.



- In the System Administration menu, press the **Password Setup** button.



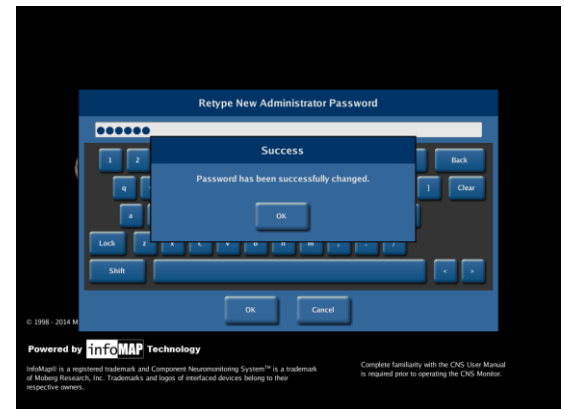
- From the Password Setup screen, four different passwords can be set. These include the Admin Password, the Deletion Password, the Archiving Password, and the Data Management Password.



- Press **Set Admin Password** to change the Administrator Password. Use the onscreen keyboard to enter the new password and press **OK**.
- Re-type the password of choice and press **OK**.



- A message will appear confirming the password has been successfully changed. Press **OK** to return to the Password Setup menu.



- Press **Set Deletion Password** to set/change the password needed to delete patient archives.

Press **Set Archiving Password** to set/change the password needed to archive patient data.

Press **Set Data Management Password** to set/change the password needed to perform all data management activities (including archiving and deletion).

- The Password Setup menu will indicate which of the passwords (beside the Administrator Passwords) are currently active.

Note: In order to turn off password protection, leave the password field empty and press **OK** on the onscreen keyboard.

- Press **Exit Menu** to return to the opening screen.



PASSWORD SETUP DURING A MONITORING SESSION

1. If a monitoring session is in progress, the option of setting or changing passwords is still available. Press the **Main Menu** button at the bottom-left of the screen and then press the **System** button on the next screen.

2. In the Systems Settings menu, press the **System Admin** button.

3. Use the onscreen keyboard to enter the Administrator Password and press **OK**.

Note: The default password is *moberg*; it could be changed at any time following the instructions of this Technical Bulletin.

4. Follow the same steps (5 to 11) described to set/change passwords from the opening screen.

